



# INDOOR WASTE MANAGEMENT



## Sell Sheet PB-3140 PUSH CONTAINERS



PB-3140-BLA



PB-3140-MSSTL



PB-3140-SIL



PB-3140-SSSTL



40 L



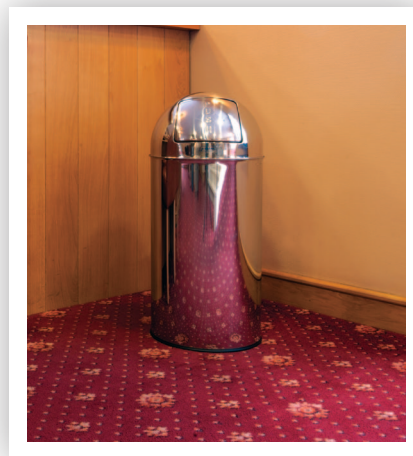
Removable galvanized  
liner with handle



3 components : dome  
lid, inside liner & body



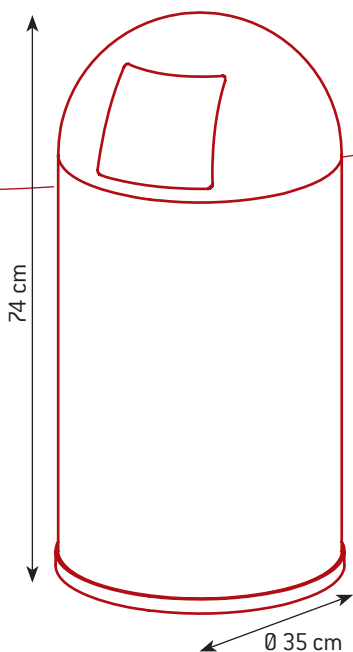
Rubber rim at the  
base protects the  
floor and prevent  
accidental injury



"Push" trap opening,  
ideal for disposing  
of waste in various  
areas



## Technical Sheet PB-3140 PUSH CONTAINERS



### CARTON SPECIFICATIONS

**Product codes :**

PB-3140-BLA - PB-3140-MSSTL  
PB-3140-SIL - PB-3140-SSSTL

**EAN codes :**

-BLA : 4897020620143  
-MSSTL : 4897020620150  
-SIL : 4897020620662  
-SSSTL : 4897020620679

**Material :**

-SIL & -BLA : Galvanised Steel (epoxy)  
-MSSTL & -SSSTL :  
Stainless Steel 430 & 304

**Colours :**

Black, Mirror Stainless Steel, Metallic  
Grey, Brushed Stainless Steel

**Capacity :**

40 L

**Product net weight :**

-SIL & -BLA : 5,20 kg/unit  
-MSSTL & -SSSTL : 4,8 kg/unit

**Product dimensions :**

[L] 35 x [W] 35 x [H] 74 cm

